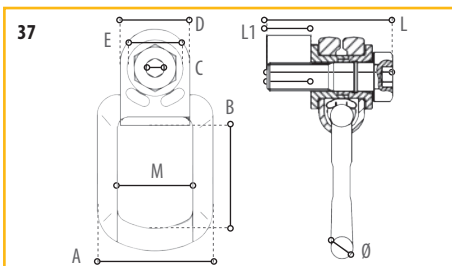
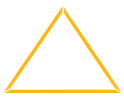
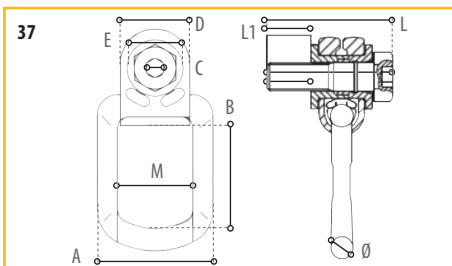


37. Wartel inbus oogbouten /
Swivel eye bolts

37	Wartel inbus oogbout / Swivel eye bolts Afmetingen / Dimensions (mm)											
Item no.	WLL (ton)	A	B	C	D	E	M	L	L1	Ø	Weight (kg)	
YE.8.033.08	0.30	35	52.50	6	30	13	45	46	10.40	14	0.36	
YE.8.033.10	0.63	35	52.50	6	30	17	45	52	16.00	14	0.38	
YE.8.033.12	1.00	40	54.00	8	36	19	68	62	18.00	18	0.71	
YE.8.033.14	1.20	40	54.00	8	36	19	68	66	21.00	18	0.72	
YE.8.033.16-30	1.50	40	54.00	8	36	19	68	70	30.00	18	0.74	
YE.8.033.16-40	1.50	40	54.00	8	36	19	68	70	40.00	18	0.75	
YE.8.033.18-26	2.00	54	80.00	12	50	30	83	83	26.00	16	1.16	
YE.8.033.20-30	2.50	54	80.00	12	50	30	83	88	30.00	16	1.19	
YE.8.033.20-55	2.50	54	80.00	12	50	30	83	113	55.00	16	1.21	
YE.8.033.20-60	2.50	54	80.00	12	50	30	83	118	60.00	16	1.25	
YE.8.033.24-35	4.00	54	94.00	14	50	36	83	95	35.00	18	1.35	
YE.8.033.24-40	4.00	54	94.00	14	50	36	83	100	40.00	18	1.38	
YE.8.033.24-60	4.00	54	94.00	14	50	36	83	120	60.00	18	1.46	
YE.8.033.27	4.00	73	106.00	17	68	41	120	120	38.00	27	4.18	
YE.8.033.30-48	5.00	73	106.00	17	68	41	120	132	48.00	27	4.40	
YE.8.033.30-70	5.00	73	106.00	17	68	41	120	154	70.00	27	4.19	
YE.8.033.36-54	7.00	73	106.00	17	68	41	120	142	54.00	27	4.65	
YE.8.033.36-70	7.00	73	106.00	17	68	41	120	158	70.00	27	4.80	
YE.8.033.36-62	8.00	94	140.50	22	86	55	156	163	62.00	31	7.60	
YE.8.033.42-72	10.00	94	140.50	24	86	65	156	176	72.00	31	8.20	
YE.8.033.42-63	15.00	104	155.00	24	95	65	176	179	63.00	40	12.40	
YE.8.033.48-74	20.00	104	155.00	27	95	75	176	194	74.00	40	13.00	



37. Hex boulons à oeil multidirectionnels /
Einschraubbare Inbus-Hebeösen mit
Drehgelenk



37 Hex boulons à oeil multidirectionnels / Einschraubbare Inbus-Hebeösen mit Drehgelenk												
Dimensions / Abmessungen (mm)												
Item no.	WLL (ton)	A	B	C	D	E	M	L	L1	Ø	Weight (kg)	
YE.8.033.08	0.30	35	52.50	6	30	13	45	46	10.40	14	0.36	
YE.8.033.10	0.63	35	52.50	6	30	17	45	52	16.00	14	0.38	
YE.8.033.12	1.00	40	54.00	8	36	19	68	62	18.00	18	0.71	
YE.8.033.14	1.20	40	54.00	8	36	19	68	66	21.00	18	0.72	
YE.8.033.16-30	1.50	40	54.00	8	36	19	68	70	30.00	18	0.74	
YE.8.033.16-40	1.50	40	54.00	8	36	19	68	70	40.00	18	0.75	
YE.8.033.18-26	2.00	54	80.00	12	50	30	83	83	26.00	16	1.16	
YE.8.033.20-30	2.50	54	80.00	12	50	30	83	88	30.00	16	1.19	
YE.8.033.20-55	2.50	54	80.00	12	50	30	83	113	55.00	16	1.21	
YE.8.033.20-60	2.50	54	80.00	12	50	30	83	118	60.00	16	1.25	
YE.8.033.24-35	4.00	54	94.00	14	50	36	83	95	35.00	18	1.35	
YE.8.033.24-40	4.00	54	94.00	14	50	36	83	100	40.00	18	1.38	
YE.8.033.24-60	4.00	54	94.00	14	50	36	83	120	60.00	18	1.46	
YE.8.033.27	4.00	73	106.00	17	68	41	120	120	38.00	27	4.18	
YE.8.033.30-48	5.00	73	106.00	17	68	41	120	132	48.00	27	4.40	
YE.8.033.30-70	5.00	73	106.00	17	68	41	120	154	70.00	27	4.19	
YE.8.033.36-54	7.00	73	106.00	17	68	41	120	142	54.00	27	4.65	
YE.8.033.36-70	7.00	73	106.00	17	68	41	120	158	70.00	27	4.80	
YE.8.033.36-62	8.00	94	140.50	22	86	55	156	163	62.00	31	7.60	
YE.8.033.42-72	10.00	94	140.50	24	86	65	156	176	72.00	31	8.20	
YE.8.033.42-63	15.00	104	155.00	24	95	65	176	179	63.00	40	12.40	
YE.8.033.48-74	20.00	104	155.00	27	95	75	176	194	74.00	40	13.00	